

# CAHME Chronicle

2007-2008 Annual Report

The Standard of Excellence in Healthcare Management Education since 1968

## Message from Chair

To All:

*As we completed our fourth year as CAHME I want to reflect on our accomplishments. During my year as your Chairman, the CAHME Membership Committee increased our total Corporate Member ranks to 29 members coming close to our initial goal of 30. With the financial uncertainties faced by our corporate members we must work harder to directly engage our professional societies and provider organizations. Their continued support is an investment in graduates who are prepared to meet the challenges of the future.*

*The business of CAHME accreditation requires the dedicated volunteer support of many busy professionals. You will find an impressive list of individuals who have been involved this year beginning on page 5. These individuals have devoted many hours to the CAMHE's mission: "To serve the public interest by advancing the quality of healthcare management education." They have served on the Board, our Councils and Committees, as Fellows and as site visitors and in doing so have served our seventy-two accredited programs in the United States and Canada. The Board and Staff of CAHME want to heartily thank them for their effort.*

*Even though CAHME is only four years into our revised journey it is important to reflect and say "thank you" to those who have worked for ACEHSA/CAHME over the forty years since accreditation became a reality in healthcare management education. With the support of Georgetown University, ACHE and HFMA we celebrated our history during the AUPHA annual meeting June. Over fifty CAHME Board Members, Current and Former Commissioners and Current and Former Fellows enjoyed a lovely evening of remembrance. Included in this issue and on the CAHME website is the list of all those who have served that we could locate. If your name is not included and you were a Commissioner or Fellow please send an email including your contact information and the year(s) you were involved to [info@cahme.org](mailto:info@cahme.org) so that we can keep an accurate alumni list.*

*Looking ahead to CAHME's bright future started with our Board planning retreat on the campus of Arizona State University. We reviewed how far we have come and decided where we wanted to focus our efforts in the next three years to take us to the next level. We left with important goals that will guide us and our top priorities are included in John's column.*

*As outgoing Chair I would like to thank our retiring Board members: Patty Brewster, Chair of the Accreditation Council and ex-officio Board member, and Jeffrey Dorsey. It has been a great year and I wish Dr. Tom Royer, our current Chair the very best.*

Bill Jessee, MD



William F. Jessee, M.D., FACMPE  
Chair CAHME  
President & CEO  
ACMPE & MGMA

## Message from the CEO

Dear CAHME Chronicle Readers,

*With the new CAHME year we crossed the frontier into the revised 2008 CAHME Criteria for Accreditation. We are working with our accredited programs to understand challenges they face as they implement competency-based curriculums. In 2007-08 CAHME programming focused on preparation for this new method of assessment for healthcare management education. We conducted successful programs for program faculty during the 2008 ACHE Congress on Healthcare Leadership and the AUPHA Annual Meeting. We also worked with our Commissioners and Fellows to prepare for the eight accreditation site visits scheduled this first year.*



President/CEO John S. Lloyd,  
MBA MPH, FACHE

*The Board reminds Carla, Crystal and I that “keeping the trains on the track” is our most important job but we should also be looking toward the future. Under the leadership of Strategic Issues Committee Chair Nowell Rush, we entered into a new planning cycle when the Board met with us in Tempe last January 2008 to look ahead. Our focus is now on three major initiatives that build on our success over the past four years:*

1. *Conduct training programs to support our accredited programs in developing competency-based curriculums that allow for effective evaluation. This will also facilitate sharing between programs so that the overall quality of education improves.*
2. *Move deliberately from a paper-based accreditation process to one relying on effective electronic submission techniques.*
3. *Continue increasing the acceptance of the CAHME brand from the employer community, who employ graduates of our accredited programs, as well as from students and faculty.*

*Upcoming issues of the CAHME Chronicle will provide more specifics on our plans to accomplish these new objectives.*

*Our Strategic Issues Committee is considering other strategic issues: international accreditation, undergraduate accreditation, understanding and evaluating the effectiveness of online instruction, and how to facilitate better preparation of leaders in long-term care. Working with AUPHA we hope to engage in a broad discussion of these key issues.*

*Carla, Crystal and I continue to serve our programs, sponsors and students with timely and accurate information in our efforts to advance the quality of education in healthcare management.*

*Have a Wonderful Holiday Season,*

*John*

## Report of CAHME and Board and Council Activities 2006-2007

### CAHME Board of Directors

The Board regularly reviewed the activities of the Accreditation Council and Standards Council and the regular committees: Executive, Finance and Audit, Membership, Strategic Issues and Governance. In addition, the Board reviewed the recommendations of the Ad Hoc Committee on On-line Instruction and appointed an Ad Hoc Committee on the Site Visit Format. The following are a few of the significant decisions made by the Board in 2007-2008.

- Hold a strategic planning retreat at Arizona State University in January, 2008
- Authorized hiring the Rossiter Training to develop of training programs for program faculty and site visitors based on the 2008 CAHME Criteria for Accreditation.
- Authorized proceedings to register the CAHME name with the Federal Trade Commission to protect against unauthorized use of the name by unaccredited programs.
- Made policy changes:
  - Required that site visits be scheduled six months prior to the end of a program's accreditation. This is six months earlier than the current practice.
  - Limited the number of pages in Volume One of the Self-Study document to 125 pages
  - Decided that CAHME would not accredit programs with less than 125 hours of instruction where students and faculty were present in the same location
  - Appointed an Ad Hoc Committee on the Site Visit Format
- Approved the 40th Anniversary Celebration of ACEHSA/CAHME and appointed Mary Stefl, PhD to be honorary chair of the event.

### Accreditation Council

The Council met twice during 2007-2008 to review site visit team recommendations for initial accreditation and reaccreditation. After lengthy deliberations, the Council recommended that nine programs be reaccredited for a period of six years. It also recommended initial accreditation for two programs that had successfully completed the candidacy process.

The Council carefully reviewed the recommendations of the Ad Hoc Committee on On-Line Instruction and endorsed their recommendations to the Board. In addition, the Council regularly reviewed the progress of the approximately eight programs in the candidacy process during the year.



CAHME Fellows Dan Gentry and Simone Cummings along with CAHME Commissioners, Jessie Tucker, Charlotte Barrett, Bill Dowling at work during the deliberations at the Accreditation Council meeting Rosemont, IL.

### Standards Council

After two years of diligent work, the Standards Council attentively observed the implementation and progress of the programs as they assimilated the changes in the 2008 CAHME Criteria for Accreditation. The charge of the Standards Council is to review all the criteria on a continuing basis and to do a complete review every four years.

## Strategic Issues Committee

In the Fall of 2007 the Strategic Issues Committee (SIC) recognized the need to update the CAHME Strategic Plan. The committee had been regularly reviewing the goals and objectives set in 2005 and realized that progress had been made in many areas but felt it was time to look again to the future of CAHME. With adequate resources in reserve the committee decided to ask the question – How does CAHME add value? Staff and Board members surveyed CAHME's three main constituent groups – corporate members, faculty, and students. The results informed the proceeding of the retreat held on the campus of Arizona State University in Tempe on January 14-15, 2008.

After the retreat the SIC worked to refine the goals and measures and with the approval of the Board directed staff to:

- (1) Continue to strengthen the CAHME brand,
- (2) Plan a fee based training program for program directors and faculty who are struggling to implement a competency-based curriculum and,
- (3) Continue to plan for a more effective system of electronic submission of program self-study documents and subsequent evaluation by the site visit team.

## Membership Committee

The Membership committee met several times to plan its outreach efforts to prospective corporate members. The committee was successful bringing three new corporate members into the CAHME family – Partners Healthcare, Froedtert Lutheran Memorial Hospital and Children's National Medical Center.

## Finance And Audit Committee

The CAHME Board created this committee which met for the first time in October, 2007. The financial oversight activities had been previously done by the CAHME Executive Committee but it was felt that a dedicated committee could be more efficient and diligent about review of CAHME financial operations. The Finance and Audit committee meets quarterly to review the ongoing financial health of CAHME.

## Governance Committee

The Governance committee serves as the nominating committee for CAHME Board and Councils. In that role recruited officers and new board members:



Frank Coyne, Ph.D  
Vice President  
Blue Cross Blue Shield Association



John A. Drew, FACHE  
President & CEO  
Athens Regional Medical Center



Ann Hatcher  
Vice President  
Talent Management  
Hospital Corporation of America

In addition, this committee conducts the annual board assessment and reviews the results to find ways to improve the functioning of the CAHME Board of Directors.

## Board of Directors 2007 -2008

---

**William F. Jessee, M.D., FACMPE, Chair**  
 President & Chief Executive Officer  
 American College of Medical Practice  
 Executives

**Mary E. Stefl, PhD, Past Chair**  
 Chair & Professor  
 Trinity University

**Thomas C. Royer, M.D., Chair-Elect**  
 President & Chief Executive Officer  
 Christus Health

**James W. Begun, Ph.D., Secretary-Treasurer**  
 Professor  
 University of Minnesota

**Deborah J. Bowen, FACHE, CAE**  
 Executive Vice President and Chief  
 Operating Officer  
 American College of Healthcare  
 Executives

**Patricia L. Brewster, MHA, FACMPE**  
 Chief Executive Officer  
 Southern Orthopaedic Specialist, LLC

**Richard L. Clarke, DHA, FHFMA**  
 President and Chief Executive Officer  
 Healthcare Financial Management  
 Association

**Jeffrey A. Dorsey**  
 President and Chief Executive Officer  
 HCA Continental Division

**John A. Drew, FACHE**  
 President & CEO  
 Athens Regional Medical Center

**David J. Fine, MHA, FACHE**  
 President and Chief Executive Officer  
 St. Luke's Episcopal Health System

**John S. Lloyd, MBA, MPH**  
 President and Chief Executive Officer  
 Commission of Healthcare Management  
 Education

**Stephen S. Mick, Ph.D., FACHE**  
 Arthur Graham Glasgow Professor & Chair  
 Department of Health Administration  
 Virginia Commonwealth University

**Frankie L. Perry, FACHE**  
 Public Member

**Nowell Rush, MBA**  
 Public Member

**Dean G. Smith, Ph.D.**  
 Senior Associate Dean for Administration  
 University of Michigan

## Accreditation Council

---

**Patricia L. Brewster, MHA, FACMPE, Chair**  
 Chief Executive Officer  
 Southern Orthopaedic Specialist, LLC

**Daniel M. Ashby, M.S., FASHP**  
 Director of Pharmacy  
 The Johns Hopkins Hospital

**Charlotte Barrett, MBA, RHIA, FACHE**  
 Asst. Chairman for Administration and  
 Finance  
 Department of Orthopaedics  
 University of Miami Miller School of  
 Medicine

**Louise Lemieux-Charles, Ph.D.**  
 Professor and Chair  
 University of Toronto

**Martin J. D'Cruz, FHFMA, MBA**  
 Vice President – Manage Care Services  
 St. Vincent Health

**Kurt Darr, J.D., ScD., FACHE**  
 Professor  
 George Washington University

**William L. Dowling, Ph.D.**  
 Professor and Chair  
 Department of Health Services  
 University of Washington – Seattle

**Richard S. Kurz, Ph.D.**  
 Professor  
 School of Public Health  
 St. Louis University

**Lt.Col. Kevin G. LaFrance, Ph.D., FACHE**  
 United States Army  
 Chief Financial Officer  
 Great Plains Regional Medical Command

**John S. Lloyd, MBA, MPH**  
 President and Chief Executive Officer  
 Commission on Accreditation of Healthcare  
 Management Education

**Margaret F. Schulte, DBA, FACHE**  
 Vice President of Education  
 Healthcare Information and Management  
 Systems Society

**Lt. Col. Jessie L. Tucker, III, Ph.D., FACHE, CFM**  
 US Army  
 Chief Operating Officer  
 Womack Army Medical Center

**Daniel J. West, Jr., Ph.D., FACHE, FACMPE**  
 Professor  
 University of Scranton

**Andrea White, Ph.D.**  
 Associate Professor  
 Medical University of South Carolina

**Jacqueline S. Zinn, Ph.D.**  
 Associate Professor  
 Temple University

## Fellows

---

**Major Lee W. Bewley, Ph.D., MHA, CHE**  
 Assistant Professor  
 Graduate Program in Health Administration

**Lloyd R. Burton, D.M., MHA, M.S.Ed**  
 Associate Professor  
 Weber State University

**Simone M. Cummings, Ph.D., MHA**  
 Research Instructor  
 Washington University School of Medicine

**Daniel Gentry, Ph.D., MHA**  
 Program Director  
 St. Louis University

**Patrick A. Grusenmeyer, ScD, MPA, FACHE**  
 Vice President  
 Cancer Services and Helen F. Graham  
 Cancer Center

**Alfred A. Hamilton, Ph.D., MAJ, USA**  
 Medical Chief Information Officer  
 United States Central Command, MacDill  
 AFB, FL

**Rob Haley, Ph.D., MBA, MHS**  
 Director, Market Research  
 Blue Cross Blue Shield of Florida

**Patricia G. Ketsche, Ph.D., MBA, MHA**  
 Assistant Professor  
 Georgia State University

**Craig J. Nesta, JD, MBA, MS, CHE, CMPE**  
 Administrative Director  
 Brigham and Women's Hospital

**Russell Porter, Ph.D. Ed.D.**  
Associate Professor  
Health Care Management

**Lt. Col. Glenn A. Yap, Ph.D., MBA, CHE**  
USAF, MSC  
Grand Forks AFB

## **Standards Council**

---

**Thomas C. Royer, M.D., Chair**  
President & Chief Executive Officer  
Christus Health

**Robert S. Bonney, J.D., FACHE**  
Senior Vice President  
St. Luke's Health System

**Judith G. Calhoun, Ph.D.**  
Associate Professor  
University of Michigan

**Andrew N. Garman, PsyD., MS**  
Associate Chair  
Rush University

**Timothy H. Hanson, MHA**  
President & CEO  
HealthEast Care System

**Lavonna Lewis, Ph.D.**  
Assistant Professor and Director  
University of Southern California

**John S. Lloyd, MBA, MPH**  
President and Chief Executive Officer  
Commission of Healthcare Management  
Education

**Janet Porter, Ph.D.**  
Executive Vice President and Chief  
Operating Officer  
Dana-Farber Cancer Institute

**Andrea Rossiter, FACMPE**  
Executive Vice President  
Medical Group Management Association

**Margaret Sabin, MHSA**  
CEO, Sutter Health Partners and  
Vice President, New Product Development  
Sutter Health Partners

**Joel I. Shalowitz, M.D., MBA**  
Professor and Program Director  
Kellogg Graduate School of Management

**Mary E. Stefl, Ph.D.**  
Chair & Professor  
Trinity University

**William G. Gonzalez, MBA, MPA, FACHE**  
Healthcare Advisor  
Wm Gonzalez & Associates  
(Consultant)

## **Self-Study Handbook Committee**

---

**Jacqueline S. Zinn, Ph.D., Co-Chair**  
Associate Professor  
Temple University

**Bob Hernandez, DrPH Co-Chair;**  
Professor  
University of Alabama at Birmingham

**Andrew Garman, PsyD;**  
Associate Chair  
Dept. of Health Systems Management  
Rush University

**Tina Smith, MHSc;**  
Senior Lecturer and Program Director  
University of Toronto

**Wayne Sorenson, Ph.D.**  
Professor  
Texas State University-San Marcos

**Lt. Col. Jessie L. Tucker, III, Ph.D.,  
FACHE, CFM**  
US Army  
Chief Operating Officer  
Womack Army Medical Center

## **Ad-Hoc Committee on On-Line Instruction**

---

**Dolores Clement, Dr.P.H., FACHE,**  
Committee Chair  
Professor and MSHA Program Director  
Department of Health Administration  
Virginia Commonwealth University

**Robert S. Bonney, J.D., FACHE**  
Senior Vice President  
St. Luke's Health System

**Richard Foster, Ph.D.**  
Professor of Finance and Health  
Administration,  
University of Colorado Denver

**Andrew Garman, PsyD, MS**  
Associate Chair  
Department of Health Systems  
Management  
Rush University Medical Center

**John Lloyd, MBA, MPH, FACHE**  
President & CEO  
CAHME

**David Moxley, MLS**  
Director of Learning Technologies,  
Associate Director, Executive Programs,  
Health Management & Informatics,  
University of Missouri-Columbia

**Steve O'Connor, Ph.D., FACHE**  
Professor and Director, MSHA Program  
Department of Health Services  
Administration  
University of Alabama at Birmingham

**Carla Jackie Sampson, MBA, MS**  
Vice President  
CAHME

## **Ad Hoc Committee on Site Visit Format**

---

**Martin D'Cruz, MBA, FHFMA**  
Vice President – Managed Care Services  
St. Vincent Health

**Alfred A. Hamilton, Ph.D. MAJ, USA**  
Medical Chief Information Officer  
United States Central Command  
Command Surgeon's Office

**Patricia G. Ketsche, Ph.D., MBA, MHA**  
Asst. Professor  
Institute of Health Administration  
Robinson College of Business  
Georgia State University

**Richard S. Kurz, Ph.D.**  
Professor and Dean  
University of North Texas HSC School of  
Public Health

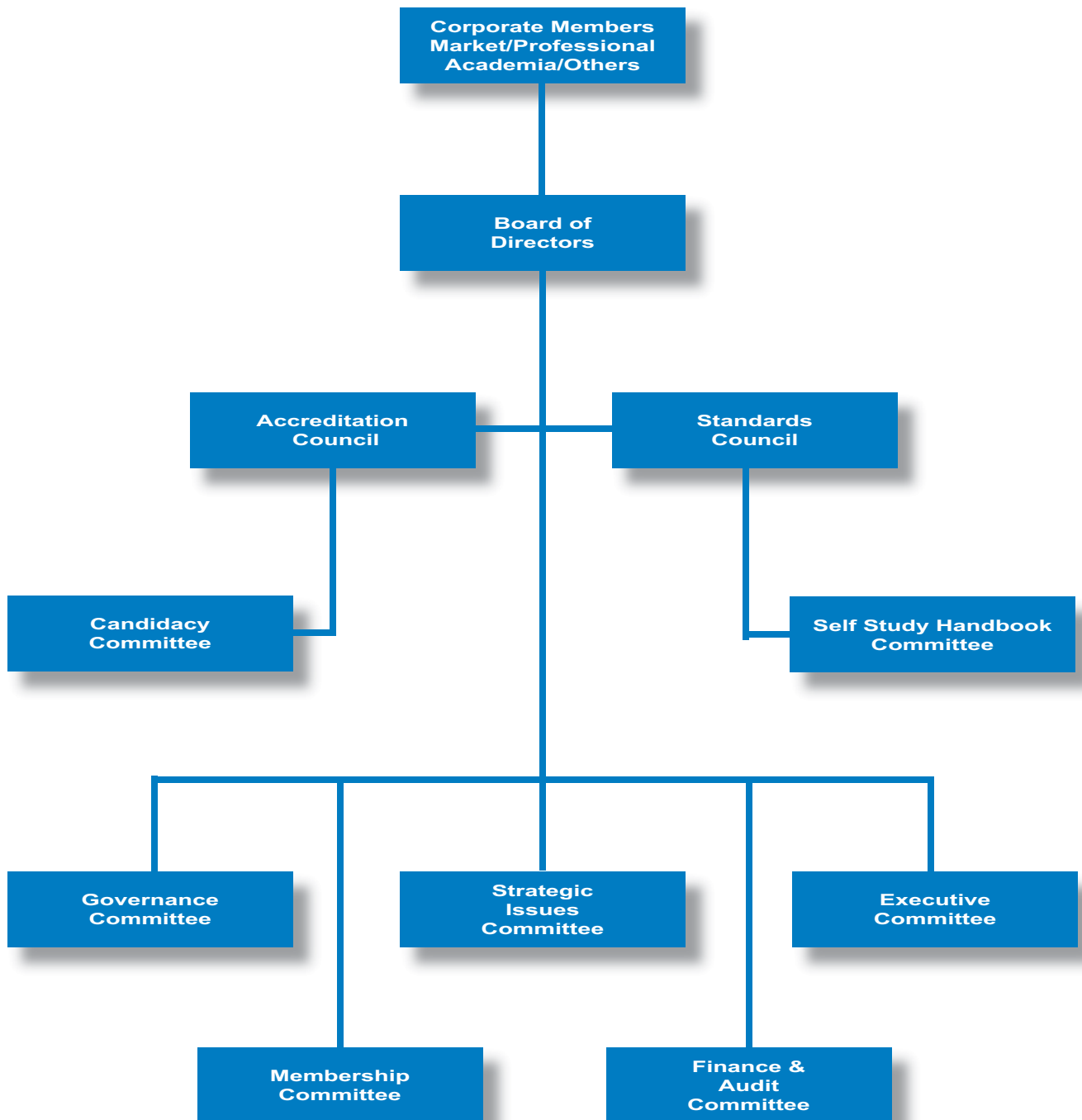
**Kevin G. LaFrance, Ph.D., FACHE**  
Associate Professor  
University of the Incarnate Word

**John S. Lloyd, MBA, MPH**  
President/CEO  
CAHME

**Carla Jackie Sampson, MBA MS**  
Vice President  
CAHME

**Lt. Col. Jessie L. Tucker, III, Ph.D.,  
FACHE, CFM**  
US Army  
Chief Operating Officer  
Womack Army Medical Center

ORGANIZATION CHART



## 2007-2008 CAHME Audited Financial Summary

|  | FY 2006-2007<br>Actuals | FY 2007-2008<br>Budget | FY 2007-2008<br>Actuals | Variance<br>Better/ (Worse) |
|--|-------------------------|------------------------|-------------------------|-----------------------------|
| <b>Revenues</b>                            |                         |                        |                         |                             |
| Corporate Member Dues                      | \$ 540,000              | \$ 535,000             | \$ 530,000              | \$ (5,000)                  |
| Annual Program Fees                        | 152,100                 | 151,200                | 150,150                 | (1,050)                     |
| Site Visit Fees                            | 113,979                 | 107,000                | 109,100                 | 2,100                       |
| Contributions <sup>1</sup>                 | 50,000                  | 60,000                 | 104,900                 | 44,900                      |
| Interest/Dividend Income                   | 18,113                  | 8,000                  | 29,484                  | 21,484                      |
| Other fees                                 | 11,145                  | 12,400                 | 26,925                  | 14,525                      |
| <b>Total Revenue</b>                       | <b>\$ 885,337</b>       | <b>\$ 873,600</b>      | <b>\$ 950,559</b>       | <b>\$ 76,959</b>            |
| <b>Expenses</b>                            |                         |                        |                         |                             |
| Administrative Services                    | \$ 12,018               | \$ 13,000              | \$ 12,018               | \$ 982                      |
| Appeal Expense                             | 610                     | 0                      | 0                       | 0                           |
| Management Consulting                      | 103,707                 | 59,000                 | 56,353                  | 2,647                       |
| Depreciation                               | 9,339                   | 9,500                  | 11,833                  | (2,333)                     |
| Insurance – business                       | 3,911                   | 4,500                  | 7,469                   | (2,969)                     |
| Dues and subscriptions                     | 9,447                   | 5,000                  | 9,117                   | (4,117)                     |
| Fellow Training                            | 7,690                   | 5,000                  | 2,338                   | 2,662                       |
| Board Meetings                             | 33,471                  | 55,000                 | 26,118                  | 28,882                      |
| Accreditation Council                      | 60,701                  | 60,000                 | 58,189                  | 1,811                       |
| Standards Council                          | 8,578                   | 15,000                 | 349                     | 14,651                      |
| Professional Meetings                      | 5,386                   | 4,000                  | 9,558                   | (5,558)                     |
| Office Expense                             | 34,807                  | 41,100                 | 43,130                  | (2,030)                     |
| Miscellaneous Expense                      | 5,682                   | 26,000                 | 15,743                  | 10,257                      |
| Professional Fees                          | 11,534                  | 14,000                 | 14,736                  | (736)                       |
| Rent                                       | 41,772                  | 41,341                 | 40,530                  | 811                         |
| Salaries/related expense                   | 362,012                 | 369,504                | 353,340                 | 16,164                      |
| Site Visit Expenses                        | 57,255                  | 65,000                 | 62,553                  | 2,447                       |
| Travel/Lodging                             | 42,928                  | 45,000                 | 40,113                  | 4,887                       |
| In-Kind Accreditation Expense <sup>2</sup> | 0                       | 0                      | 99,400                  | (99,400)                    |
| <b>Total Expense</b>                       | <b>\$ 810,848</b>       | <b>\$ 831,945</b>      | <b>\$ 862,887</b>       | <b>\$ (30,942)</b>          |
| <b>Net Income</b>                          | <b>\$ 74,489</b>        | <b>\$ 41,655</b>       | <b>\$ 87,672</b>        | <b>\$ 46,017</b>            |

<sup>1</sup> Includes In-Kind Contribution of Site Visitors

<sup>2</sup> To recognize the value of volunteer site visitor contribution

## Corporate Members 2008-2009



## Alumni List

The following is the list of all those who have served as a Commissioner or Fellow since 1968. If your name is not included and you were a Commissioner or Fellow please send an e-mail including your contact information and the year(s) you were involved to [info@cahme.org](mailto:info@cahme.org)

|                       |                          |                          |                        |
|-----------------------|--------------------------|--------------------------|------------------------|
| Aaronson, William     | Filerman, Gary           | King, John G.            | Roo, Aad de            |
| Abell, Richard        | Files, Laurel A.         | Kissick, William L.      | Rosen, Harry M.        |
| Akinci, Fevzi         | Fine, David J.           | Koprowski, William       | Rossiter, Andrea       |
| Aldrich, Ronald R.    | Fischer, Gary L.         | Kralewski, John E.       | Royer, Thomas C.       |
| Anderson, Paul S.     | Fisher, Michael L.       | Kurowski, Bettina        | Rush, Nowell           |
| Ashby, Daniel M.      | Forman, Morrey           | Kurz, Richard S.         | Rustige, Raymond F.    |
| Austin, Charles J.    | Foster, Richard          | Lachner, Bernard         | Sabin, Margaret        |
| Bajda, Lilian         | Freedman, Theodore J.    | LaFrance, Kevin G.       | Saywell Jr., Robert M. |
| Baker, G. Ross        | Frey, Donald C.          | Lambrinos, James         | Schenller, Eugene S.   |
| Barrett, Charlotte    | Gamble, Paul A. W.       | Langley, Kathleen A.     | Schevchik, Gwen        |
| Battistella, Roger M. | Gamm, Larry D.           | Lasser, Andrew A.        | Schnall, David         |
| Begun, James W.       | Garman, Andrew N.        | Leatt, Peggy             | Schoenrich, Edyth H.   |
| Benson, Keith J.      | Garza, Diana (Didi)      | Lee, Joel                | Schorr, Philip         |
| Bergwall, David F.    | Gautam, Kanuk            | Lemieux-Charles, Louise  | Schulman, Elizabeth    |
| Berki, S.E.           | Gay, E. Greer            | Levy, Sam                | Schulte, Margaret F.   |
| Berman, Howard        | Gelmon, Sherril          | Lewis, James             | Shalowitz, Joel I.     |
| Bewley, Lee W.        | Gentry, Daniel           | Lewis, Lavonna           | Shortell, Stephen M.   |
| Bilodeau, Michel      | Gerowitz, Martin B.      | Lind, S. Donna           | Sinay, Tony            |
| Binker, Barbara       | Gilliam, Thomas R.       | Lipstein, Steven         | Slater, Carl           |
| Boerstler, Heidi      | Glowasky, Albert V.      | Lloyd, John S.           | Smith, David B.        |
| Bonney, Robert S.     | Gonzalez, William G.     | Loebs, Stephen           | Smith, Dean G.         |
| Bowen, Deborah J.     | Goodman, Gerald          | Lowi-Young, Mimi         | Smith, Marc D.         |
| Breindel, Charles L.  | Gordon, Larry            | Luke, Roice              | Sorensen, Wayne        |
| Brewster, Patricia L. | Gorsky, Robin D.         | Mastorovich, Mary J.     | Starkweather, David B. |
| Brigham, James        | Graber, David            | McAdams, Rod             | Stefl, Mary E.         |
| Brown, Elizabeth      | Grady, Raymond           | McCue, Shirley           | Strack, J. Gary        |
| Brown, Gordon         | Graham II, Fred. E.      | McCurdy, Rodney K.       | Strauss, Marvin D.     |
| Brown, Helene         | Greene, Barry R.         | McCutcheon, Stephanie S. | Stumpf, Stephanie      |
| Burnett, Walter M.    | Greenwald, Howard        | Menaker, Ronald          | Sundre, Steven M.      |
| Burton, Lloyd R.      | Griffith, John R.        | Meyer, Delbert E.        | Suver, James           |
| Calhoun, Judith G.    | Grubb, Charles T.        | Mick, Stephen S.         | Swayne, Linda E.       |
| Caro, Denis           | Grusenmeyer, Patrick A.  | Miller, Dulcy B.         | Thompson, John         |
| Carpenter, Caryl E.   | Gulesian, Gwen           | Modderman, Melvin E.     | Tucker, Jessie L.      |
| Caswell, R. Jeffrey   | Haddock, Cindy           | Mora, Joseph de          | Tucker, Stephen L.     |
| Channing, Alan        | Haley, D. Rob            | Morton, Reed L.          | Vaill, Peter B.        |
| Chapman, Vera         | Hamilton, Alfred A.      | Moseley, S. Kelley       | Villanueva, Augusta    |
| Clarke, Richard L.    | Hanson, Tim              | Moxley, David            | Voinea-Griffin, Andrea |
| Clement, Dolores      | Hayes, Bob               | Moyers, Robert N.        | Volgyes, Peter         |
| Colbourne, William J. | Hayes-Bautista, David E. | Munson, Fred             | Warren, David G.       |
| Connors, Edward       | Hays, Patrick G.         | Murphy, Donna            | Washington, William N. |
| Conrad, Douglas A.    | Henshaw, Ada Sue         | Nesta, Craig J.          | Weger, Bill            |
| Constantian, Alan R.  | Hensley, Mary L.         | Newman Jr., John F.      | Welborn, Frances       |
| Covert, Michael       | Hepner, James O.         | O'Connor, Peter          | Welborn, Salty         |
| Cox, David            | Hepner, James O.         | O'Connor, Steve          | Wellington, Sheila     |
| Coyte, Peter          | Hernandez, S. Robert     | Ogwueke, Michael O.      | Wenzel, Frederick J.   |
| Crompton, Darryl E.   | Hilberman, Diana W.      | Olson, Donald            | Wenzel, Linda          |
| Cummings, Simone M.   | Holland, Max G.          | Page, John               | Wesley Jr., Nathaniel  |
| Cummins, Gaylord      | Holmberg, R. Hopkins     | Patterson, Anthony W.    | West, Daniel J.        |
| Cutter, David L.      | Holt, Robert L.          | Perry, Frankie L.        | Westerman, John H.     |
| Dadlez, Christopher M | Hulka, Barbara S.        | Peters, Douglas          | Westerman, Jorg        |
| Darr, Kurt            | Infeld, Donna Lind       | Phin, John               | Wetrich, James G.      |
| Davis, Ray            | Ives, John               | Pickett, George E.       | Wheeler, Jack          |
| D'Cruz, Martin        | Jackson, Judy            | Porter, Robert L.        | Wheeler, John R.C.     |
| Deckard, Gloria       | Jackson, Rudolph         | Porter, Russell          | White, Andrea          |
| Desrochers, Gilles    | Jackson, Rudy            | Prybil, Lawrance         | White, Kenneth R.      |
| Dobbin, Lucy          | Janke, Thomas A.         | Puhy, Dorothy E.         | Williams, Frank G.     |
| Dolan, Thomas C.      | Jessee, William F.       | Rawson, Ian G.           | Williams, Stephen J.   |
| Dornblaser, Bright    | Johns, Charles A.        | Reeves, Philip N.        | Williams, Steven       |
| Dorsey, Jeffrey A.    | Johnson, George O.       | Richardson, Mary         | Wilson, Nick           |
| Dowling, William L.   | Johnson, Keneth L.       | Richardson, William      | Winters, Irving J.     |
| Duncan, Paul R.       | Jordan, L.R.             | Robbins, Catherine J.    | Wolfman, Brunetta R.   |
| Duncan, R. Paul       | Kaluzny, Arnold D.       | Roberts, C.              | Yap, Glenn A.          |
| Ellis, E. Frank       | Kerr Jr., Bernard J.     | Roberts, John D.T.       | Zinn, Jacqueline S.    |
| Eudy, Ruth R.         | Ketsche, Patricia G.     | Robinson, Brian C.       | Zuckerman, Howard      |
| Evans, Rupert         | Kilpatrick, Kerry E.     | Rogers, Guy A.           |                        |
| Falcone, David        | Kimmey, James R.         | Romani, John             |                        |

## 2009 Education Program

### **CAHME Site Visit Preparation Workshop**

This workshop is intended for faculty and program directors in accredited programs as well as those interested in volunteering to serve as CAHME site visitors

#### **Those attending will learn:**

- Get an orientation to the revised CAHME site visit process
- Get an overview of the revised CAHME Criteria for Accreditation
- Understand the link between mission, program competencies, and curriculum.

**Faculty:** Dan Gentry, PhD, Rush University, Chicago

**Location:** Chicago, IL (during ACHE Congress on Leadership)

**Date:** Tuesday, March 24, 2009 2:00pm-5:00pm

**Palmer House Hotel** – Room TBA

### **CAHME Competency Boot Camp**

This is an intensive working sessions for ideally two or more faculty members from programs still developing their selected program competencies. Attendees are required to come with their mission and goals clearly delineated.

#### **Those attending will:**

- Understand the impetus behind the move to a competency based curriculum in CAHME accredited programs
- Develop competencies that support program mission, values, and goals
- Refine learning objectives, course content, and learning methods for your program
- Examine existing methods currently used to measure student progress toward mastery of program competencies

**Faculty:** Dan Gentry, PhD, Rush University, Chicago;  
Judith Calhoun, PhD, University of Michigan, et al

**Location:** Doubletree Hotel, Rosemont, IL

**Start Date:** Friday, April 24 at noon and adjourn Saturday, April 25 at 4pm

## At the Fall meeting of the CAHME Board of Directors the following accreditation actions were approved:

- **Columbia University: Graduate Program in Health Policy and Management (Full Time and Executive)**
  - Initial accreditation: 3 years
- **Johns Hopkins University: Master of Health Sciences in Health Finance and Management**
  - Reaccredited: 6 years
- **University of California – Berkeley: Master of Business Administration/Master of Public Health**
  - Reaccredited: 6 years
- **University of Michigan: Master of Health Services Administration**
  - Reaccredited: 6 years
- **University of Minnesota: Master in Healthcare Management**
  - Reaccredited: 6 years
- **Marymount University: Master of Science in Health Care Management**
  - Reaccredited for 3 years
- **University of Houston – Clear Lake: Master of Health Administration Program**
  - Reaccredited for 3 years

---

## CA<sup>H</sup>ME Chronicle

2000 14th Street North, Suite 780  
Arlington, VA 22201  
Tel: 703-894-0960 | Fax: 703-894-0941  
[www.cahme.org](http://www.cahme.org) | [info@cahme.org](mailto:info@cahme.org)

Postage  
Stamp

Mail to: